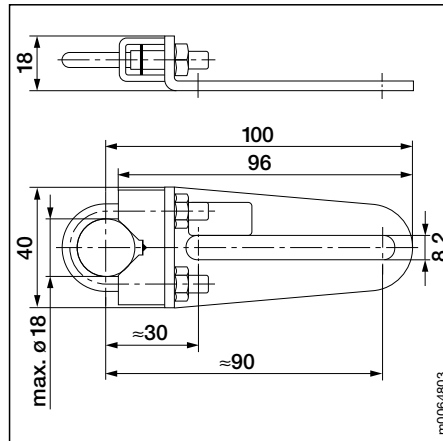


## KH8, KH6



m0063803



m0064803

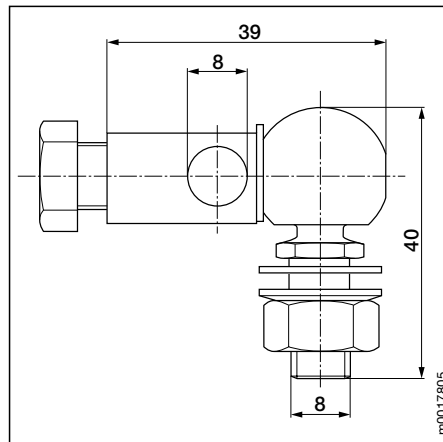
**KH8 Universal crank arm**  
Zinc-plated steel; suitable for damper spindles 10...18 mm diameter or 10...14 mm<sup>2</sup>, slot width 8.2 mm

**KH6 Universal crank arm**  
as Type KH8, but slot width 6.2 mm.

## KG8



m0016712



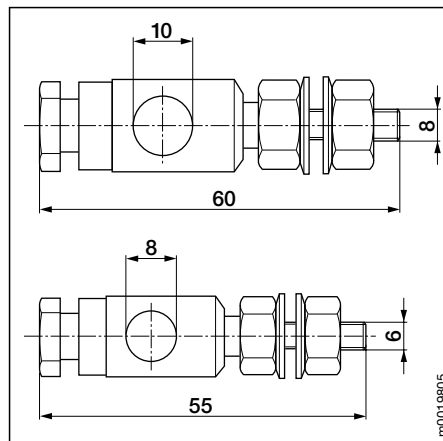
m0017805

**KG8 Ball joint**  
Zinc-plated steel; suitable for use with KH8 universal crank arms and round steel rod 8 mm diameter.

## KG10, KG6



m0018707



m0019805

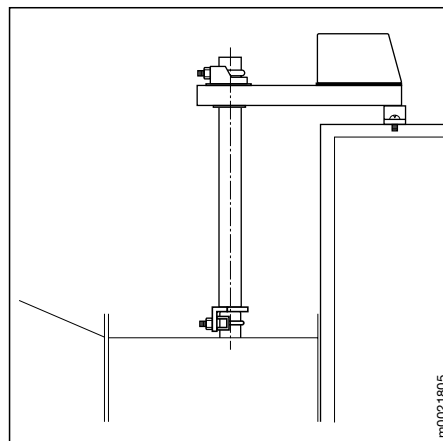
**KG10 Ball joint**  
Zinc-plated steel; suitable for use with KH8 and KH6 universal crank arms and round steel rod 10 mm diameter.

**KG6 Ball joint**  
Zinc-plated steel; suitable for use with KH6 universal crank arms and round steel rod 8 mm diameter.

## AV10-18



m0020707



m0021805

**AV10-18 Universal spindle extension**  
approx. 240 mm long; for damper spindles 10...18 mm diameter or 10...14 mm<sup>2</sup>.